

# CoastEye Data Portal

## TechWorks Marine - European leaders in robust, reliable and secure marine data.

Coasteye is a data portal which can be used for processing, publishing, visualising and analysing data from many different sources. CoastEye is a web application backed up by a powerful map server and a spatial database. Data processing chains working on real-time or archived data populate the database, which is then accessed through a web portal. The data content of the system is user-driven and flexible and we can accommodate data collected by clients.

## CoastEye features

### Flexible:

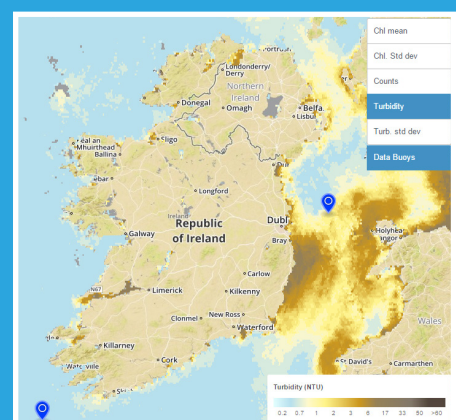
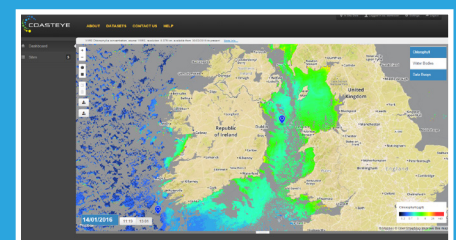
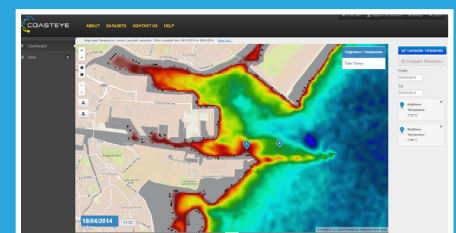
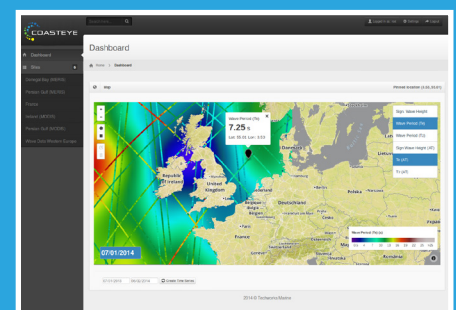
- Automated real time data delivery or archive access
- Any type of data can be included: time-series, spatial, multi-dimensional
- In-situ module: two-way data acquisition and platform management and monitoring.
- Bespoke data processing scripts and chain management can be implemented
- Portal can be web-based or stand-alone with only intranet access

### Scalable:

- Spatial database – stores raster and vector data with API to fully scalable database
- Sensor configuration management and control – scales with your network
- Multiple portal instances possible for different applications

### Secure:

- Secure logins provided
- User management, including access control and configuration, is standard
- Stand-alone versions with only local access can be provided



# CoastEye Data Portal

## Sensor Network Control System Application

**Swedish Meteorological and Hydrological Institute, Sweden**

We installed CoastEye at the Swedish Meteorological and Hydrological Institute (SMHI) to deliver the data from and provide a sensor and platform control system for a network of eight data buoys. For full security, a stand-alone version was used and access is only allowed to the system from the local intranet. The system allows sensor configurations to be setup, viewed and managed remotely. Sensors, logs and data can be monitored in real-time. Real-time out of range alerts are generated if data transmission is interrupted, buoy location changes or data quality is compromised. These alerts can trigger SMS, email or visual notifications, and alerts and notification lists are fully configurable.

## Satellite and in situ Data Integration Application

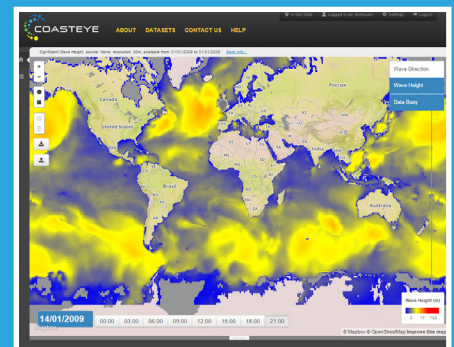
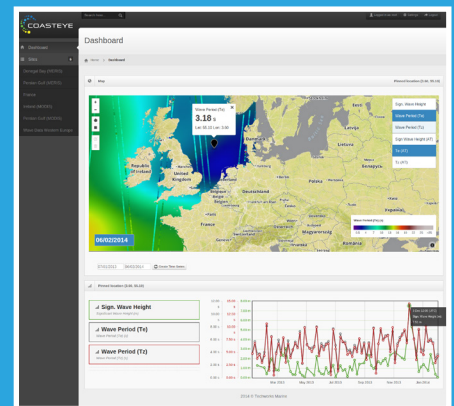
**CoastVal, European Space Agency**

The CoastEye system provides a portal for integration of satellite and in situ data for the CoastVal project. Data from European Space Agency satellites is automatically downloaded as it becomes available, and matched with in situ data observed from data buoys. The satellite data processing chain and data match-up processing chain provide pairs of data which can then be used to validate the satellite data and the data processing to determine the accuracy of the data compared to in situ observations.

## Wave Buoy Operations Console Application

**Port of Cork, Ireland**

CoastEye was developed to provide a real-time operators console for a wave buoy deployed in Cork Harbour. Data from the buoy is transmitted and displayed in real-time, using graphs and wave roses, to a stand-alone installation in the port operations room. Visual alerts are generated to indicate high waves, providing decision support to the Harbour Master and team.



## Contact Us:

**TechWorks Marine Ltd.**

T: +353 (0) 1236 5990

F: +353 (0) 1236 5992

E: [sales@techworks.ie](mailto:sales@techworks.ie)

W: [www.techworks.ie](http://www.techworks.ie)